

THE GREEN SHEET

CENTRAL PENNSYLVANIA GOLF COURSE SUPERINTENDENTS ASSOCIATION

— Founded April 11, 1939

HARRISBURG

CARLISLE

READING

Course:
WEST SHORE COUNTRY CLUB

Host:
Michael L. May

Date:
March 17, 1992

Lunch:
\$15.00

Reservations:
By March 10, 1992
Call 717-737-0741

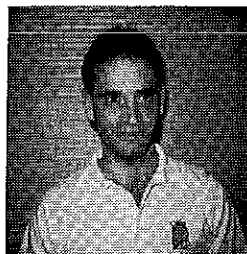
8:00 - 9:00 a.m. Registration

GETTYSBURG
CHAMBERSBURG

LEBANON
LANCASTER

YORK

President's Message



President
John Chassard
Lehigh Country Club
(215) 967-4643

Vice President
Dave Rafferty
Chambersburg Country Club
(717) 263-9747

Secretary/Treasurer
Tony Goodley, CGCS
Heritage Hills Golf Resort
(717) 755-1919

President Emeritus
Jeff Fry
Lebanon Country Club
(717) 273-1944

Board of Directors
Sam Snyder, CGCS 1992
Colonial Country Club
(717) 545-6760

Mark Eichner 1992
Lancaster Country Club
(717) 392-8638

Jeff Edwards 1993
North Hills Country Club
(215) 887-2029

John Dougherty 1993
Overlook Golf Club
(717) 569-6221

Mel Leaver 1994
Brookside Country Club
(215) 966-2354

Ken Pepple 1994
Wyncote Country Club
(215) 932-4610

Education Committee
Sam Snyder, CGCS

Membership Committee
Mel Leaver

Golf Commission
John Dougherty

Public Relations/Social Committee
Mark Eichner

Bylaws/Planning
Jeff Edwards

Chapter Relations/Nominations
Jeff Fry

Past Presidents
Fred N. Baker
Charles A. Barley
C. William Black, CGCS
Greg Borzok, CGCS
John Boyd
Dwight H. Brubaker
Robert Beyer, CGCS
Charles H. Cadiz, CGCS
Kenneth Dietrich, CGCS
Greg Fantuzzi, CGCS
Richard Funk
Jeff Fry
Michael C. Hair
Riley E. Heckert
Fred Heinlen
Cameron G. Henderson
James Jones, CGCS
Bryon F. Knoll, Jr.
Harry I. Latchaw
James Maclaren, CGCS
John McCormick
George Morris
Y. Lewis Payson
David P. Portz, CGCS
Daniel L. Snowberger
Richard Suttles
Edward Tabor
Bill Wall, Jr.
David Weitzel, CGCS
Michael Wilt
Richard Wilt
Terry Wueschinski, CGCS

There are very few days left until our chaotic season begins. We will spend many hard hours at work this season, sometimes with no relief in sight. The stress of these times and the economic uncertainty defines a greater need for the support of each other. Your involvement both professionally and socially is vital. The sharing of our ideas and experiences is a benefit we should not ignore!

This year we will host three luncheon meetings as opposed to previous dinner meetings. The Board is hopeful this will make member attendance more convenient. An August social event is being planned in place of our routine golf and educational meeting. Your input on this outing would be helpful and appreciated.

The Board is initiating a pre-pay system for the monthly meetings. All cost will be covered with your mailed-in check which will act as your reservation. This system will prove to be easier for the host superintendent and eliminate accounting headaches.

Any new members will be sponsored by attesting members on the day of acceptance into the C.P.G.C.S.A. If you attest an application you will be responsible for introducing that individual to the board. We hope this will be a good opportunity to welcome new members in a comfortable environment.

As I've mentioned before, the success of any association is dependent upon its member involvement and participation. I would encourage you this season to use the resources of the C.P.G.C.S.A. and its membership to its fullest extent.

1992 COMMITTEE ASSIGNMENTS

		CO-CHAIR
PRESIDENT	JOHN CHASSARD	D. RAFFERTY
VICE PRESIDENT	DAVID RAFFERTY	T. GOODLEY
SECRETARY/TREASURER	TONY GOODLEY, C.G.C.S.	J. CHASSARD
EDUCATION	SAM SNYDER, C.G.C.S.	D. RAFFERTY
NEWSLETTER	KEN PEPPE	T. GOODLEY
MEMBERSHIP	MEL LEAVER	J. EDWARDS
GOLF	JOHN DOUGHERTY	K. PEPPE
BYLAWS, PLANNING, ELECTIONS	JEFF EDWARDS	M. EICHNER
SOCIAL, PUBLIC RELATIONS FLOWERS	MARK EICHNER	PATTI
CHAPTER RELATIONS, FINANCE NOMINATIONS	JEFFREY FRY	S. SNYDER
EXECUTIVE SECRETARY	PATTI WALL	

Work — (717) 761-8353
Home — (717) 761-5404
Fax — (717) 761-5404

MEETING	HOST SUPERINTENDENT	TOURNAMENT	SPEAKER TOPIC	SPEAKER
APRIL 16th Brookside C.C.	Mel Leaver	Hot Ball	Government Relations Is it really important	Mr. William Brubaker, Governmental Affairs
MAY 19th Moselem Springs Golf Club	Byron Knoll, Jr.	Individual	What do you really know about pesticides	Mr. William Riden, Turf Specialist-Rhone-Poulenc
JUNE 24th Fairview Golf Course	Jim Jones CGCS	6 - 6 - 6	Why do superintendents Love/Hate the weatherman?	Mr. Rob Dixon, Meterologist, WHTM Ch. 27
JULY 28th Colonial C.C. - Joint w/Keystone	Sam Snyder CGCS	Quota Points	To be determined	Dr. John Harper, III, Prof. Emeritus P.S.U.
AUGUST Social Meeting			Social	Possible HersheyPark
SEPT. 24th Reading C.C.	Stuart Hartman	Blind Partners	What's Hot - What's Not in 1992	Dr. Peter Landschoot Asst. Prof. Turfgrass Science Extension Turfgrass Spec., P.S.U.
OCTOBER Silver Creek - Joint w/Philly	Bill Yob		Joint with Philadelphia	To Be Announced
NOV. 4th Fox Chase	Steve Graybill	Scramble	Annual Meeting - Elections	No Speaker

DIRECTORS PROFILE

Below is a short profile so you may know a little more about the 1992 CPGCSA officers and directors.

President — John Chassard - Lehigh Country Club (215) 967-4643

John worked for 3 years on the grounds crew at Indian Springs, and was on the grounds crew for 1 year at Saucon Valley Country Club, before becoming the assistant at Lehigh Country Club. John is in his 5th season as the superintendent of Lehigh Country Club. John is a graduate of Penn State Turfgrass program. He is married to Susan and has a 3 year old German Shepherd, Gracy.

Vice President — Dave Rafferty - Chambersburg Country Club (717) 263-9747

Dave originally hails from Erie, PA. At the age of 10, in the Golf shop at Gospel Hill Golf Course weekends and after school. At 12 years old Dave began working the crew with rotary work. Dave became the superintendent of Titusville Country Club 1981-1986. Dave has been the superintendent of Chambersburg Country Club, in Scotland, PA till present. Dave was a member of the Northwestern PA G.C.S.A., was a director, served as Secretary/Treasurer, and was also President 1985 through part of 1987. Dave has been a member of the C.G.S.A.A. and is the newly elected President of the Allied Golf Course Superintendents Association of PA. Dave is also on the PTC committee for pesticide regulations.

Director — Sam Snyder CGCS - Colonial Country Club (717) 545-6760 - Educational Chairman

Sam began his career as grounds crew, then assistant superintendent of Iron Master Country Club, PA. Sam then became the superintendent of Punxsutawney Country Club, to a superintendent of Grandview Golf Club, and then the golf course manager (and Pro-shop manager) of Sheraton Golf Links, PA. Sam is presently the superintendent of Colonial Country Club, Harrisburg. Sam has held many positions in numerous associations, some of which are: Director, Chairman of Gov't. Regulations of the PTC, and Scholarship and Research Committee, Special Fund Raising Committee for the Golf Course Superintendents Association and also the campaign manager for Director Randy Zidik.

Director — John Dougherty, Overlook Country Club (717) 569-6221 - Golf Chairman

John started working on Golf Courses at the age of 15 at Blue Ridge Country Club. He continued working at Blue Ridge C.C. until he finished the 2 year turf program at Penn State in 1982. John went on to become the assistant at Blue Mountain Golf Club from 1982 to 1983. He then became superintendent at Lost Creek G.C. from 1983-1986, then back to Blue Mt. as superintendent in 1986 and 1987. After working at Davis Landscaping from 1987-1989, John came back to golf as assistant superintendent at Armitage G.C. and is presently the superintendent at Overlook G.C. John has been married to Robyn for 7 years and has two boys, Shane, 4 and Jason, 1½.

Director — Mark Eichner — Lancaster C.C. (717) 392-8638, Social, Public Relations

Mark spent his first 18 years of life in South East Asia as the son of missionaries. His career in turfgrass started at Flying Hills G.C. pushing rotary for Dave Weitzel. Three seasons later he enrolled in Penn State's turfgrass program. Through the program he served an internship at Burning Tree Club in Washington, D.C. Following graduation he was employed at both Whitemarsh Valley Country Club and Oak Terrace Golf Club in suburban Philadelphia. Mark is currently first assistant at Lancaster C.C. He is newly married to Tracy and they are fixing up their new home.

Secretary/Treasurer — Tony Goodley CGCS, Heritage Hills Golf Resort (717) 755-1919

Tony graduated from North Carolina State with a degree in Turfgrass management. He became the assistant superintendent at Shannon Green, VA. Tony then became the superintendent and Amenities Co-ordinator at Lake Holiday Estates, VA. After that Tony was the superintendent at Loudom Golf & Country Club, VA for 9 years, then 3 years as a superintendent at River Bend Golf & Country in VA. Tony is presently the construction superintendent and golf course superintendent at Heritage Hills Golf Resort in York, PA.

Director — Mel Leaver, Brookside Country Club (215) 966-2354 - Membership Chairman

Mel graduated from Penn State in 1980 with a BS in Agronomy. Mel began working as a greensworker at Lehigh where he became the Second Assistant. Mel became the assistant at Brookside, then the superintendent at Golf Club at Shepherd Hills. Mel is presently the superintendent at the Brookside Country Club. Mel has been a member of the CPGCSA and was a Director with the CPGCSA 1981-1987. Mel is married to Karen and has 3 children.

Ken Pepple — Wyncote Country Club (215) 932-4610 - Newsletter Editor

Ken got started in the turf profession in 1980 at Carlisle Country Club. During 1986 he was accepted at University of Maryland where he graduated in 1988. Since graduation, Ken became the Assistant Superintendent at Llaneech C.C. in Philadelphia for 1 year then moving back to the area of Central PA, he accepted the responsibilities of Assistant Superintendent at Outdoor C.C. for 1 year. In 1990, Ken accepted the position of Superintendent at Overlook Golf Club under Manheim Township for 2 years. Finally, he recently took over Wyncote C.C. which just started construction January 6, 1992.

Jeff Edwards — North Hill Country Club (215) 887-2029

Jeff graduated from Penn State Turfgrass management in 1988. Jeff began his golf course career at Aronimink Country Club 1978-1979, then White Manor Country Club 1980, to Rolling Green C.C. 1985, Chester Valley as an assistant 1985-1989 and superintendent at North Hills Country Club since January 1990. Jeff is presently a member of GCSAA, the PTC, Philadelphia GCSA, and the CPGCSA. Jeff is married to Sharon for 2½ years.

Past President — Jeff Fry — Lebanon Country Club (717) 273-1944

Jeff began his career by working as part of the grounds crew at Carlisle Country Club at age 14 and worked his way up to Assistant Superintendent. Jeff graduated from Penn State Turfgrass program in 1985. Jeff is presently the superintendent of Lebanon Country Club and has been for the past four years. Jeff has been a member of GCSAA, PTC and the Central Penn since 1981. He is married to Wanda, has a dog Max and a baby girl — Abigail!

CENTRAL PA. GOLF COURSE SUPERINTENDENTS ASSOCIATION

Meeting Notice: **THIS IS A LUNCHEON MEETING**

DATE; Monday , April 6th, 1992

LOCATION; Brookside C.C.

HOST; Mel Leaver

MEETING TIME; 11:00 A.M.

(BOARD OF DIRECTORS MEETING; 10:00 A.M.)

LUNCH; 11:30 A.M.

GOLF; 12:30-Shotgun

TYPE OF TOURNAMENT;

SOCIAL HOUR; Beer & Soda on Course

DINNER; -

Cash bar cocktail time after golf

COST; CART-\$13.00

SHOWERS; yes

LUNCH-\$23.00

DRESS; Casual (no jeans or shorts)

PROGRAM; Bill Brubaker, "Gov't Relations-Is it really important?"

.....
MEETING RESERVATION AND DINNER POLICY

All dinners are pre-paid and depending on the club, lunch and golf may also be included in pre-paid cost.

All fees due for meeting must be mailed in time to reach the return address by the reservation deadline. If uncertain of your reservation, call Patti to confirm.

MONTHLY MEETINGS ARE PRE-PAID REGISTRATION ONLY-NO EXCEPTIONS.

You may cancel up to 48 hours prior to the meeting and receive a full refund by contacting Patti Wall (717)761-5404 (not the host or hosting course).

It is in the bylaws of the CPGCSA, that monthly meetings are for members only. Exceptions are made at the discretion of the hosting superintendent.

.....
RESERVATION FORM

NAME; _____ COURSE/CO. _____

ADDRESS; _____

MEMBER HANDICAP _____ GUEST _____ HANDICAP _____

LUNCH/GOLF; \$36.00 _____ LUNCH ONLY \$23.00 _____

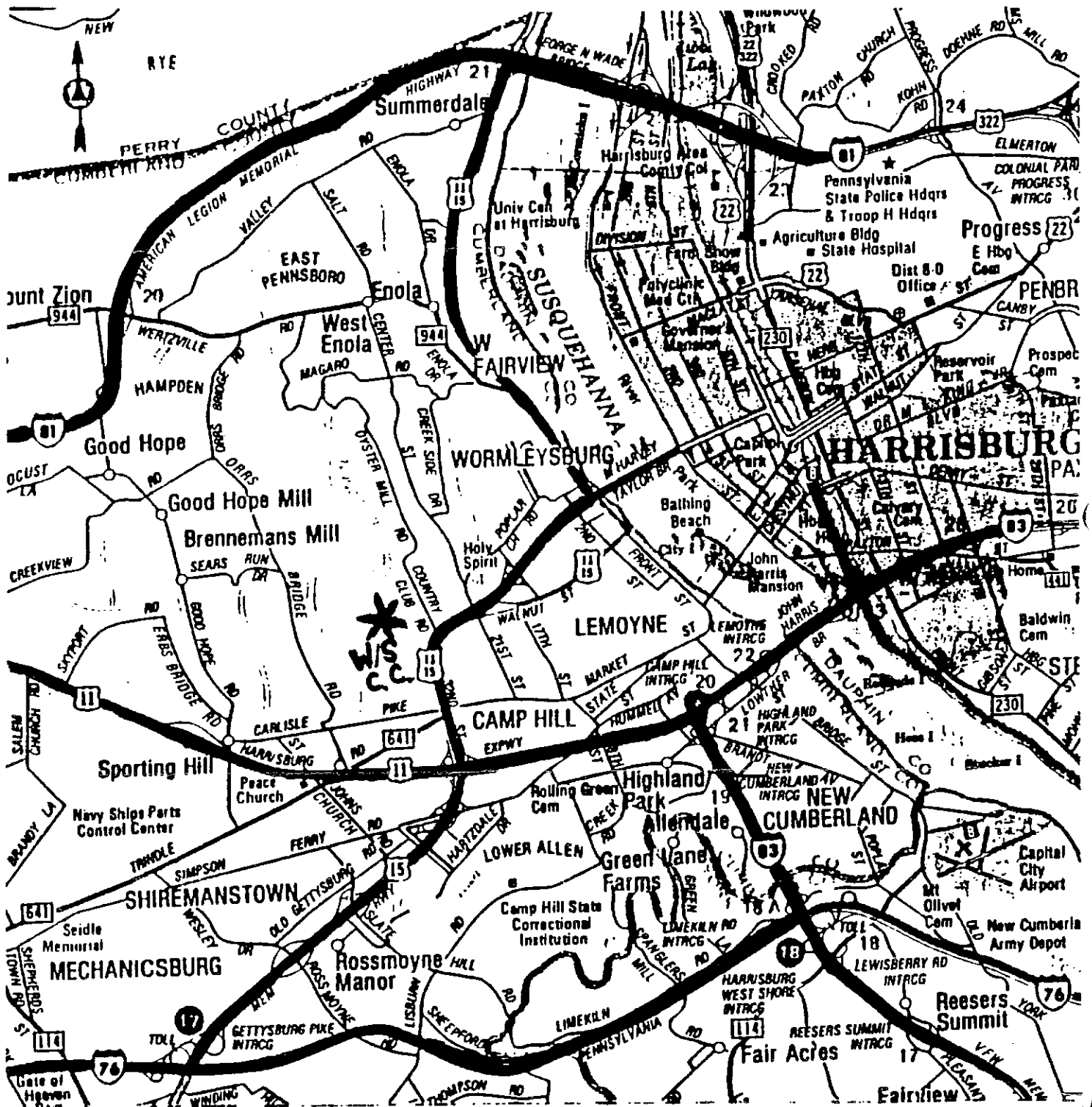
DEADLINE; April 4th, 1992

MAKE CHECKS PAYABLE TO **CPGCSA**

Patti Wall, 508 Spring House Rd., Camp Hill, Pa. 17011

C.P.G.C.S.A. 1992 WINTER EDUCATION MEETING
TUESDAY, MARCH 17, 1992
WEST SHORE COUNTRY CLUB

8:00 - 9:00	REGISTRATION	(COFFEE AND DANISH)
9:00 - 9:05	OPENING COMMENTS	DAVE RAFFERTY CHAMBERSBURG C.C.
9:05 - 9:15	PRESIDENTS REPORT	JOHN CHASSARD LEHIGH C.C.
9:15 - 9:45	LEGISLATIVE PROCESS	REP. RON MARCICO 105 TH DIS DAUPHIN CO.
9:45 - 10:15	NOW IT CAN BE TOLD	TONY GOODLEY C.G.C.S. HERITAGE HILLS G.C.
10:15 - 11:00	HAZARDOUS TREE EVALUATION	TOM SMILEY PLANT PHYSIOLOGIST, BARTLETT TREE
11:00 - 11:20	AFTER THE STORM	GREG FANTUZZI C.G.C.S CARLISLE C.C.
11:20 - 12:00	WHAT WE DON'T KNOW ABOUT WATER	TOM McCARTY - MULTI COUNTY EXTENSION AGENT, WATER QUALITY
	LUNCH	
1:00 - 1:30	AQUATIC WEED CONTROL	BILL KIRKPATRICK - FISHERIES BIOLOGIST, AQUATIC ENVIRONMENT CONSULTANTS
1:30 - 2:00	WATER RIGHTS	DEPARTMENT OF ENVIRONMENTAL RESOURCES
2:00 - 2:30	TURF DISEASES PAST, PRESENT AND FUTURE	DR. PETE LANDSHOOT PENN STATE UNIVERSITY
2:30 - 3:00	GREEN CONSTRUCTION. DOING IT YOURSELF	BILL WALL ARMITAGE G.C.



"Central Penn Newsletter Supporters"

FISHER & SON CO. INC.
237 E. KING STREET
MALVERN, PA 19355
(215) 644-3300
Distributors of turfgrass & horticulture supplies

GOLF CARS, INC.
4180 SKYRON DRIVE, BOX 247
BUCKINGHAM, PA 18912
(215) 340-0880
Clubcar, Golfcars, and Utility Vehicles

LAWN & GOLF SUPPLY CO. INC.
P.O. BOX 447, 647 NUTT RD.
PHOENIXVILLE, PA 19460
(215) 933-5801
Turf maintenance equipment & supplies

POCONO TURF SUPPLY CO., INC
P.O. BOX 372
HORSHAM, PA 19044
(215) 672-9274
Turf supplies and Evergreen turf covers

AER-CORE, INC.
47 HERON HILL DRIVE
DOWNTOWN, PA 19335
(215) 458-0890
Contract Aerification

JERSEY TURF SPECIALISTS
JACK MONTECALVO
37A ELMTOWN BLVD.
(609) 567-9001
Deep tine aerification with Verti-drain & hydrojet

PRO-LAWN PRODUCTS INC.
DONALD M. HOLLINGER
858 MOUNT JOY ROAD
MANHEIM, PA 17545

SEEDWAY, INC.
55 WILLOW SPRINGS CIRCLE
YORK, PA 17402
(717) 764-9814
Seed, Fertilizer

EGYPT FARMS, INC.
P.O. BOX 223
WHITE MARSH, MD 21162
(410) 335-3700
Supplier of Soil Mixes to Golf Courses and Landscapers

FARM AND GOLF SUPPLY CO., INC.
BENNETT WARTMAN
7709-7725 RIDGE AVENUE
PHILADELPHIA, PA 19128
(215) 834-6015 / (215) 483-5000
Golf supplies and chemicals and fertilizers

NOR-AM CHEMICAL CO.
1133 SOMERSET STREET
SOMERSET, NJ 08873
(908) 846-8173 / (816) 891-7580

STULL EQUIPMENT CO.
TURF & INDUSTRIAL DIVISION
201 WINDSOR ROAD
POTTSTOWN, PA 19464
800-724-1024
Turf equipment sales

BLUE RIDGE PEAT FARMS INC.
RR 1, BOX 292A
WHITE HAVEN, PA 18661
(717) 443-9596
Top dressing, sand, potting soil, construction mix

EDITORIAL

PESTICIDES RULES & REGULATIONS A QUICK OVERVIEW

The Pennsylvania Dept. of Agriculture defines a pesticide application business as a government entity or commercial establishment engaged in the application of pesticides and meeting the definition of a public or commercial pesticide applicator.

Businesses **must** be licensed in order to apply or purchase general or restricted use pesticides. A license must be obtained for each certification category in which a business makes applications, and an applicator certified in that category must be employed by the business at all times.

A record of each pesticide application made by a business must be maintained for three years and made available upon request by the Dept. of Agriculture. Records shall include:

- Date of application, and, for those pesticides specifying a reentry period, the hour of completion
- Name and address of the customer and application site
- Brand name, formulation, amount and dosage of each pesticide
- Names and registration number of all persons involved with pesticide

Prior notification of residents who dwell on land contiguous to an application site will be required for proposed commercial and public applications of restricted use pesticides. However, this is not required for General use pesticides unless the person makes a written request to the application business within 7 days of proposed application. Remember land is not considered contiguous and notification is not required if a 100' buffer is maintained between the application site and the boundary of the neighboring property, or if a **public** road lies between the application site and the property in question. Notification must be provided between 45 and 15 days prior to the proposed application date.

I urge all members to attend our March educational meeting. Dave has set up an excellent itinerary for the day, including Rep. Ron Marsico from the 105th District who will talk on how pesticide bills go through the legislative process in becoming laws.

BOARD NEWS

Please note new changes: we will now be holding a 50/50 at our monthly meeting and the funds will be for our Scholarship/Research Fund. Tickets will be sold \$ 1-1 ticket, \$ 2-3 tickets, \$ 3-5 tickets.

If anyone would like to join a committee, your help would be greatly appreciated. Please contact any director or officer for more information.

The trophy money will be raised this year to \$5.00 to help cover the cost of golf awards.

Please be sure to know your responsibilities if you are an attesting superintendent for a new member. You should attend the meeting with the new member when he will be introduced into the association, and should help the new member by introducing him to other members and making him feel as comfortable as possible.

According to our bylaws, monthly meetings are for member only. Guests will be allowed at the discretion of the hosting superintendent.

We are very sorry to hear of the death of Mike Liska and John McCormick's father. Our deepest sympathy is extended to their families.

The CPGCSA now has a fax machine. Should you need to fax information to Patti, the number is the same as Patti's home telephone number (717) 761-5404. Be sure to let it ring and run through the recorded message, then the fax will automatically turn on.

Please remember to mail in your dues soon, (along with your information update) so we can update our Roster Book.

Patti Wall — 508 Springhouse Road
Camp Hill, PA 17011

or

Call Patti's work — (717) 761-8353 — Home (717) 761-5404

Just A Reminder — If you have any accomplishments or things you've done that could aid other members, please be sure to get the information to Patti or Ken Pepple at least a month before.